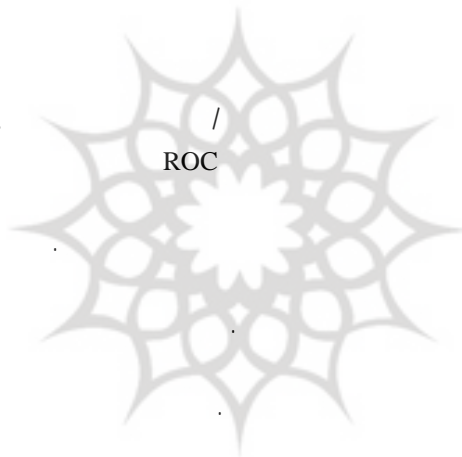


ROC



پروژه شکارگاه علوم انسانی و مطالعات فرهنگی
ROC
پرتال جامع علوم انسانی

(Onishi & Braimoh, 2007b)

Theobald .(Strahlers & Lambin, 1994)

(1998) Hobbs

()

()

)

(

Y

$$\text{Logit}(p) = \ln \left(\frac{p}{1-p} \right) = a + \{b_1 \times X_1\} + \{b_2 \times X_2\} + \{b_3 \times X_3\} + \dots + \{b_n \times X_n\}$$

Y Y

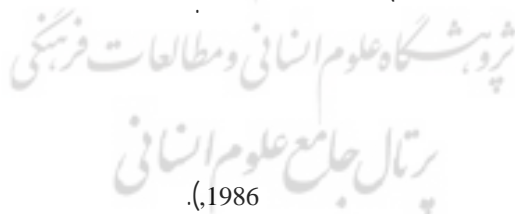
a

X_n... X X X
b_n... b b b

Jongman, et al., 1998))

.(Pan, et al.,1999

.(Sluiter, de Jong, 2007)



Nelson & Aldrich)

)

.(1986

(

(Geoghegan, et al, 2001)

(,2001 Lambin & Serneels)

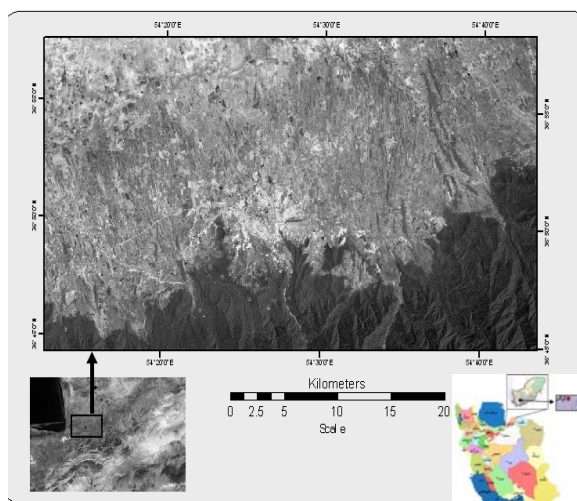
&Yeh Wu Allen & Lu ,2003)

:(Kleinbaum,1994)

(1997

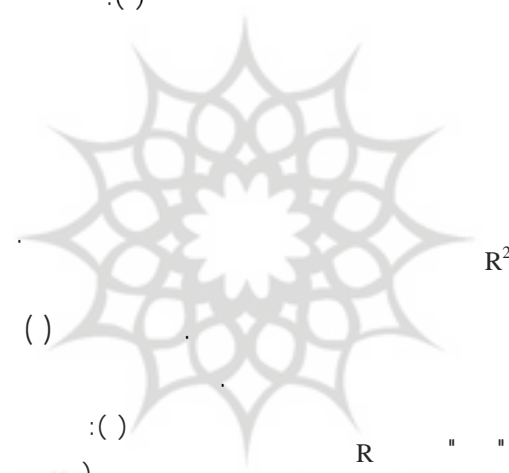
$$f(z) = \frac{1}{1 + e^{-z}}$$

$$P(Y = 1 / X_1, X_2, \dots, X_K) = \frac{1}{1 + e^{-(\alpha + \sum_{i=1}^k \beta_i X_i)}}$$



TM

: ()



ROC
ROC
ROC
/ (Lo & Hu,2007)

Pseudo-R²
R²

R²

()

: ()

R " "

		(A)
		(B)
		(C)
		(D)
		(E)
		(F)
		(G)
		(H)
		(I)
		(J)
		(K)
		(L)
	*	(M)

(1973) McFadden (Domenicich & 1975) (osking & Clark, 1986) McFadden

Pseudo-R²

: ()

" *

"

() *

*

SHAPE

) SLEUTH

(Clarke, et al.,1997) (

DEM

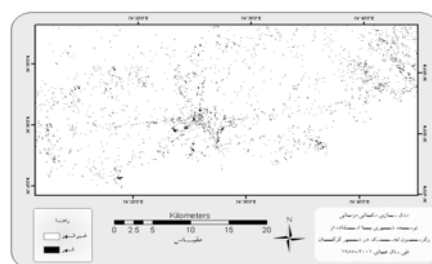
(/)

پژوهشگاه علوم انسانی و مطالعات فرهنگی
پرتال جامع علوم انسانی

()

()

()



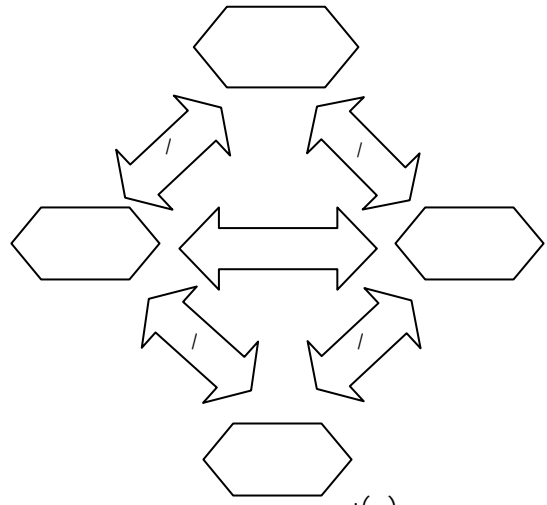
Y : ()

KM2

Pseudo- ROC

/ /

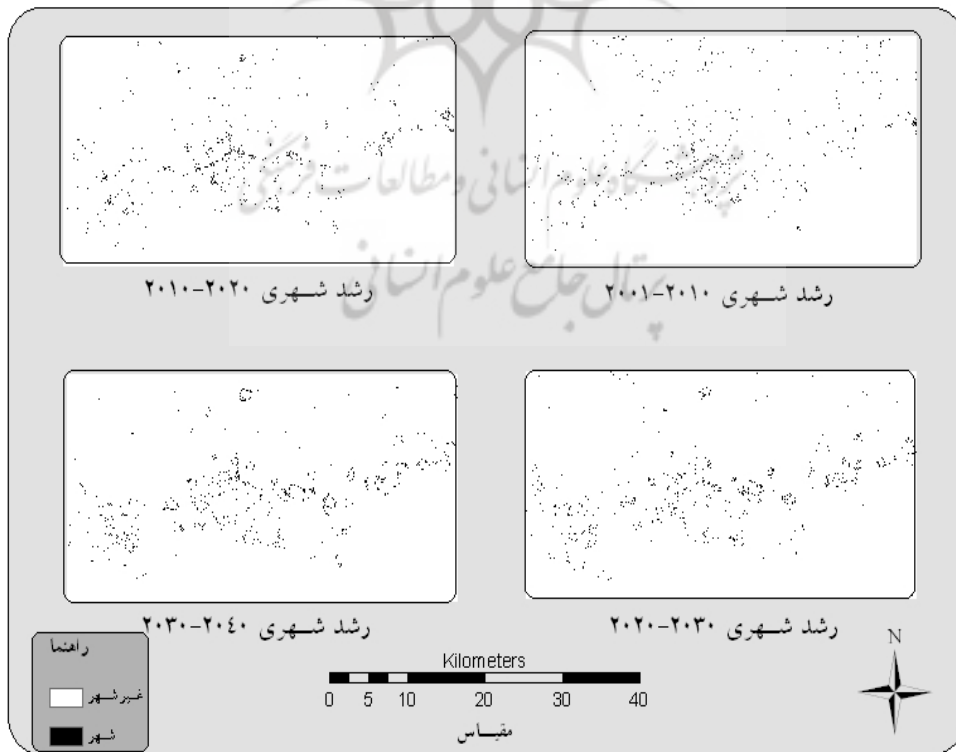
R²



$$\text{Logit (87-2001)} = -4.9629 - (0.00033 \times F) + (0.96794 \times I) + (0.00006 \times D) - (1.66448 \times L) + (1.92012 \times K) + (1.59072 \times J) - (0.00020 \times B) + (0.00793 \times A) - (0.000099 \times H) + (0.56282 \times M)$$

: ()

()



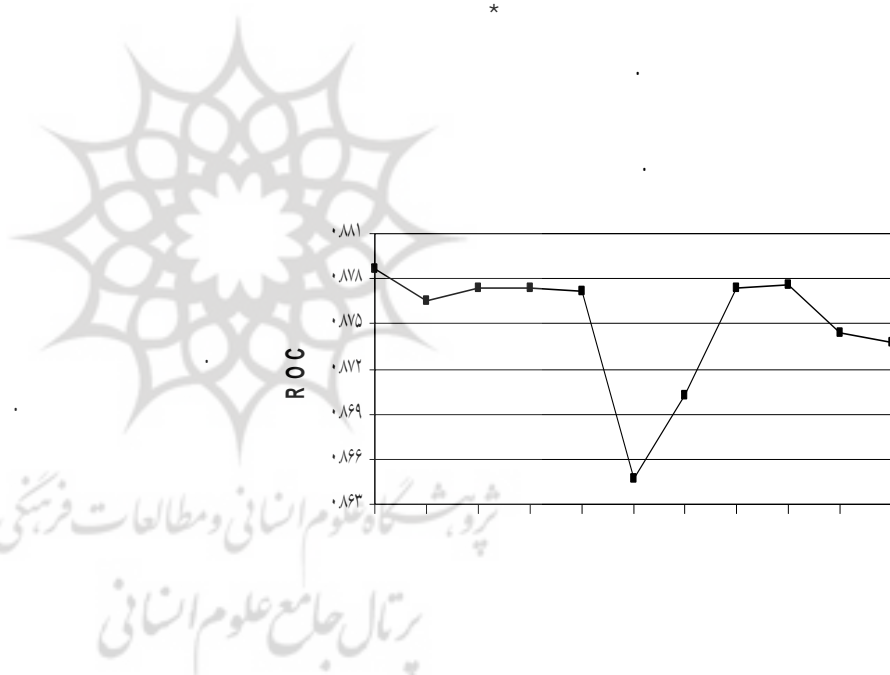
: ()

ROC

SLEUTH

()

ROC



متغیر مستقل حذف شده

()

()

- 1-Cellular Automata
- 2-Maximum likelihood
- 3- Relative Operating Characteristic
- 4-Pseudo
- 5-Supervised classification
- 6-Post-classification Comparison

Aldrich, J.H., F.D., Nelson. 1986. Linear Probability, Logit and Probit Models (3rd edition). Beverly Hills, CA. Sage Publications.

Allen, J., K., Lu. 2003. Modeling and prediction of future urban growth in the Charleston Region of South Carolina: a GIS-based Integrated Approach. Conservation Ecology, 8(2), 2

Braimoh, A.K., T., Onishi. 2007b. Geostatistical techniques for incorporating spatial correlation into land use change models. International Journal of Applied Earth Observation and Geoinformation, 9, 438-446.

Clarke, K.C., S., Hoppen, & L., Gaydos. 1997. A self-modifying cellular automaton model of historical urbanization in the San Francisco Bay area. Environment and Planning B: Planning and Design, 24, 247-261.

Clark, W.A., P.L., Hosking. 1986. Statistical methods for geographers. New York: Wiley.

Domencich, T.A., Mc Fadden, D. 1975. Urban travel demand: Behavioural analysis. Amsterdam: North-Holland.

Geoghegan, J., et al. 2001. Modeling tropical deforestation in the southern Yucatan peninsular region: comparing survey & satellite data. Agriculture, Ecosystems and Environment, 85, 25-46.

Hu, Z., Lo, C.P. 2007. Modeling urban growth in Atlanta using logistic regression. Computers, Environment and Urban Systems, 31, 667-688.

Jongman, R.H., R.G., Bunce & R., Elena-Rossello. 1998. A European perspective on the definition of landscape character and biodiversity. Key concepts in landscape ecology. In J. W. Dover, & R. G. H. Bunce (Eds.), Proceedings of the 1998 European congress of the International Association Of Landscape Ecology (pp. 1-35). UK: IALE.

Kleinbaum, D.G. 1994. Logistic regression: A self-learning text. New York: Springer.

Lambin, E.F., A.H., Strahlers. 1994. Change-vector analysis in multitemporal space: A tool to detect and categorize land-cover change processes using high temporal-resolution satellite data. Remote Sensing of Environment, 48, 231-244.

McFadden, D.S. 1973. Conditional logit analysis of qualitative choice behavior. In P. Zarembka (Ed.), *Frontiers in econometrics*. New York: Academic Press.

Pan, D., et al. 1999. Temporal (1958–1993) and spatial patterns of land use changes in Haut-Saint-Laurent (Quebec, Canada) and their relation to landscape physical attributes. *Landscape Ecology*, 14, 35–52.

Serneels, S., E.F., Lambin. 2001. Proximate causes of land-use change in Narok District, Kenya: a spatial statistical model. *Agriculture, Ecosystems and Environment*, 85, 65–81.

Sluiter, R., M., de Jong. 2007. Spatial patterns of Mediterranean land abandonment and related land cover transitions. *Landscape Ecology*, 22, 559–576.

Theobald, D.M., N.T., Hobbs. 1998. Forecasting rural land-use change: a comparison of regression and spatial transition-based models. *Geographical and Environmental Modeling*, 2(1), 65–82.

Wu, F., A.G., Yeh. 1997. Changing spatial distribution and determinants of land development in Chinese cities in the transition from a centrally planned economy to a socialist market economy: a case study of Guangzhou. *Urban Studies*, 34(11), 1851–1880.

