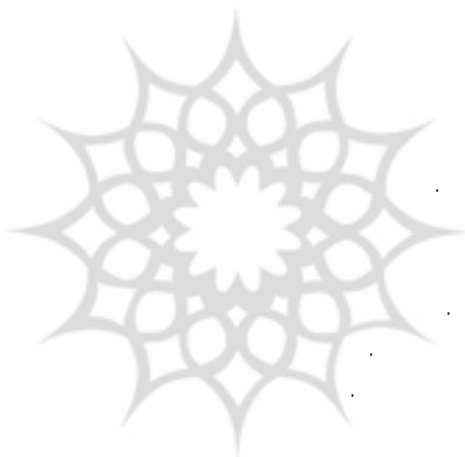


چکیده

Quick bird ETM+ TM

GIS



پژوهشگاه علوم انسانی و مطالعات فرهنگی
رتال جامع علوم انسانی

()

(Iannone, 2002)

(Rössler, 2003)

(UNESCO, 2006)



(Aminzadeh & Samani, 2006)

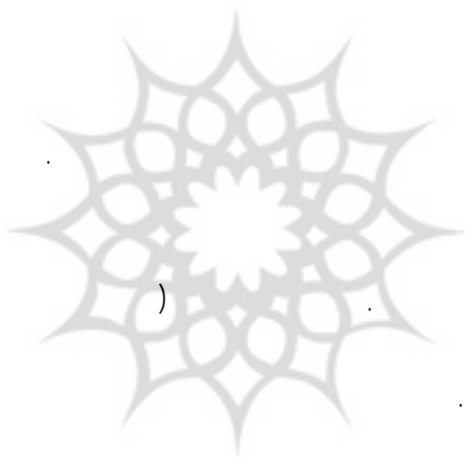
پژوهشگاه علوم انسانی و مطالعات فرهنگی
پرتال جامع علوم انسانی

(Rössler, 2003;Wilkinson, 2003,

)

.Kruckman, 1987)

(



(

GIS

پژوهشگاه علوم انسانی و مطالعات فرهنگی
رتال جامع علوم انسانی

(Rences,

.1999)

)

(

()

()

()

()

()



()

پژوهشگاه علوم انسانی و مطالعات فرهنگی
پرتال جامع علوم انسانی

()

()

()

۵

()

()

()

()

۶

()

()

:

()

)

(



:()

:()

پژوهشگاه علوم انسانی و مطالعات فرهنگی (۱۳۸۷)

:)

()

:)

پرتال جامع علوم انسانی

)

" ()

(



:()

:)

....

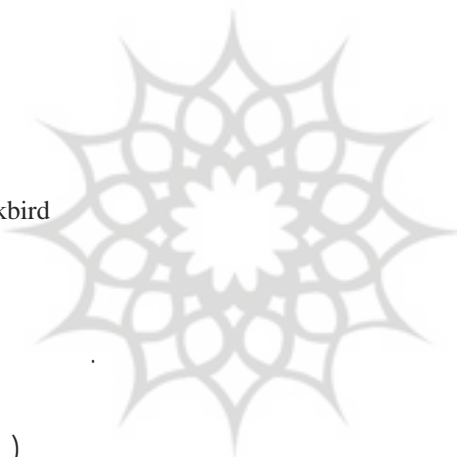
()

()

ETM TM

« »

Quickbird



()
()
پروژه نگاه علوم انسانی و مطالعات فرهنگی
پرتال جامع علوم انسانی

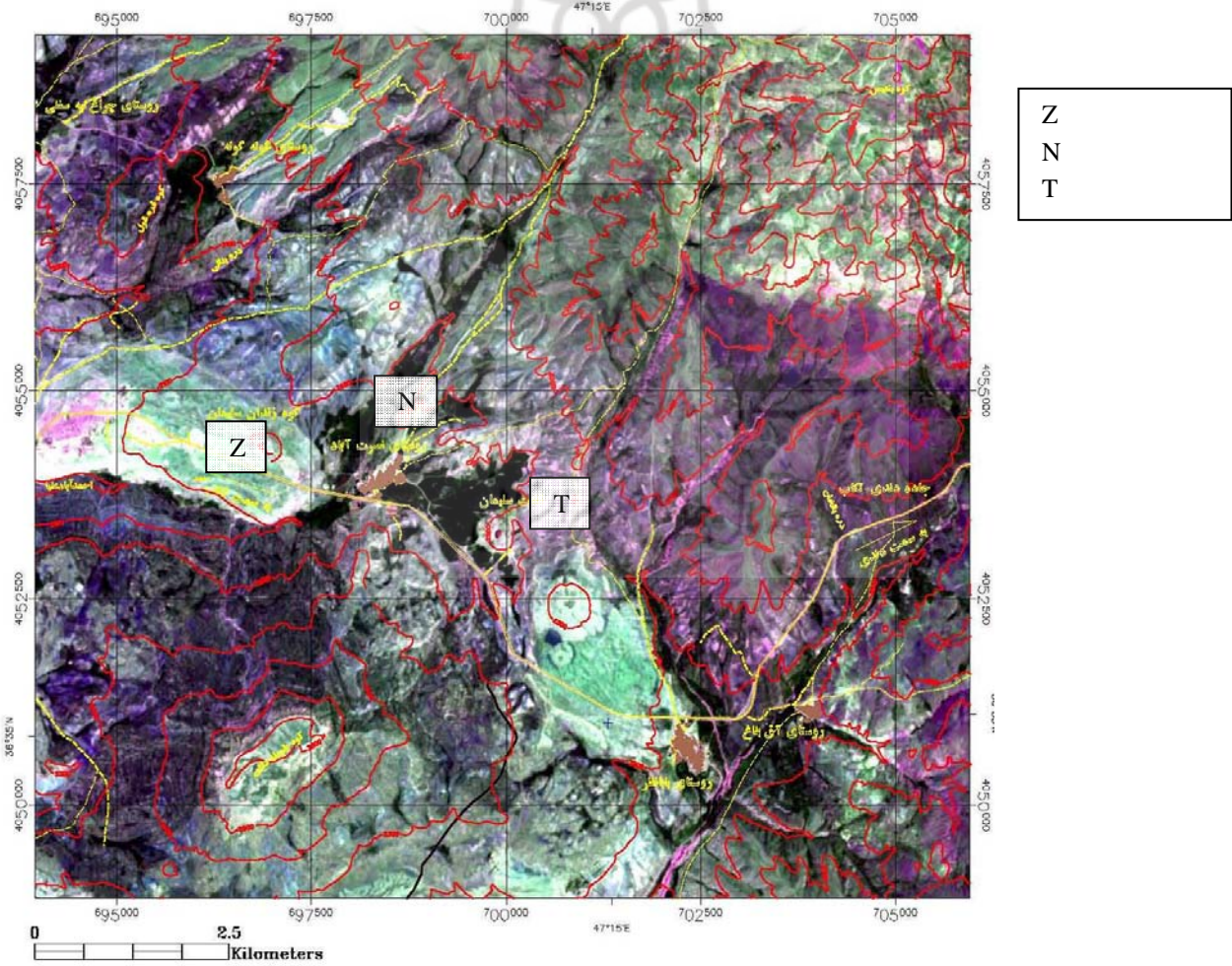
()
()

)

(

()

()



() :

(:)

Fe Mn H2S As

)

(



) ()

(
 م انسانی و مطالعات فریبندی
 پرتال جامع علوم انسانی

:()

(Samani, 2002

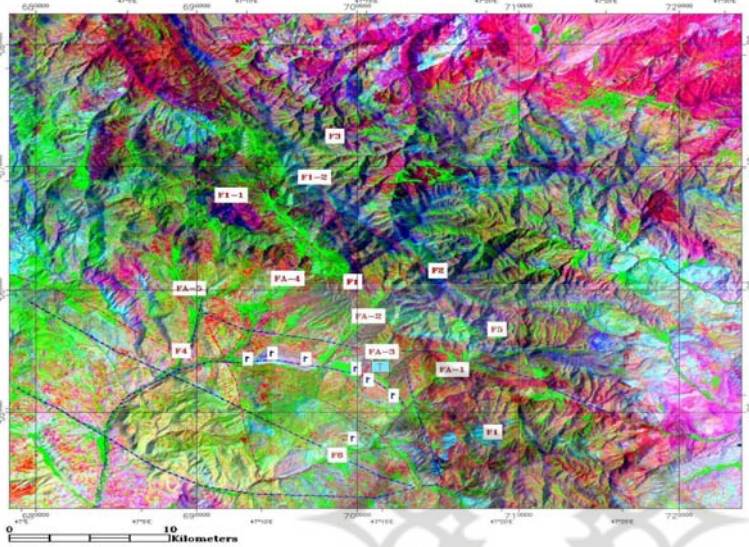
)

(

(:)

()

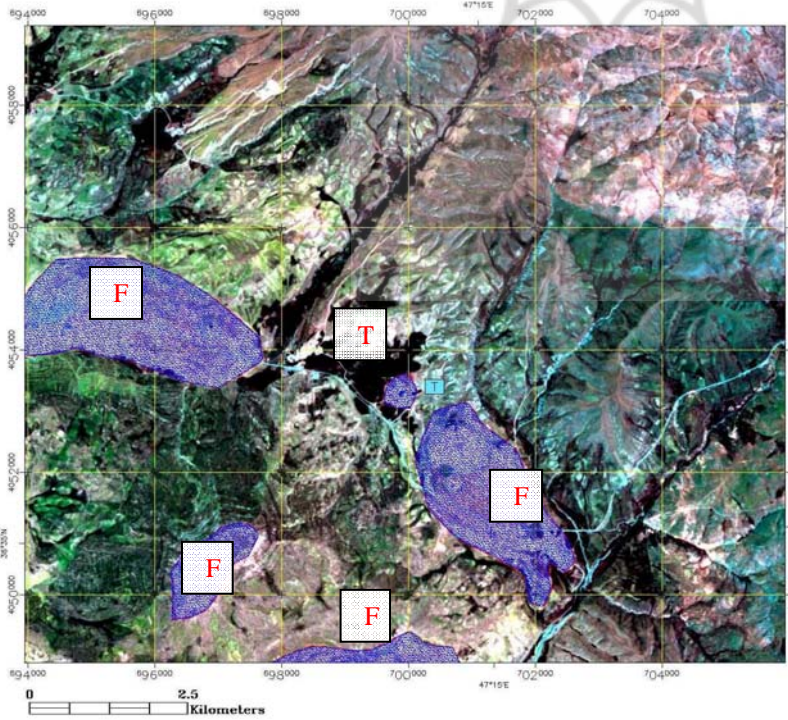
...



F
T
.....

:()

(:)



F
T

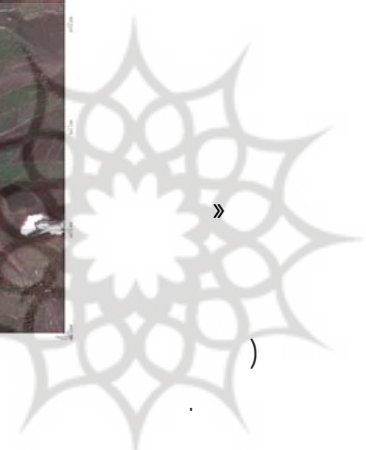
:()

(:)

()



() ()



«

:()

(

(

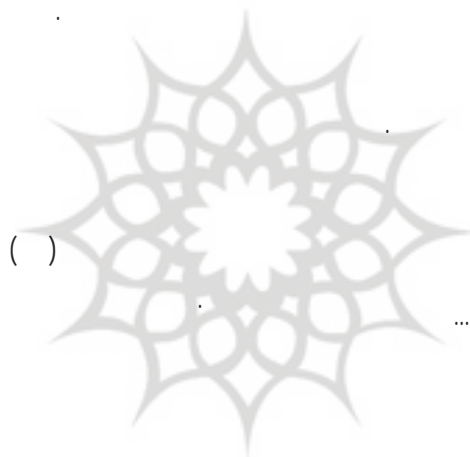
پژوهشگاه علوم انسانی و مطالعات فرهنگی
 رتال جامع علوم انسانی

)

(

)

(...



()

پژوهشگاه علوم انسانی و مطالعات فرهنگی
پرتال جامع علوم انسانی

()

1-Remote Sensing

2-International union for conservation of nature
and natural resource (IUCN)

3-Integrated Conservation

4-Vibrated Basin

5-Feature Forming

"(Remote

. Sensing)

Aminzadeh,B., F.,Samani .2006. Identifying the Boundaries of Historical Site of Persepolis Using Remote Sensing. Remote Sensing of Environment, No.102, pp. 52-62.

Aminzadeh,B., F.,Samani and B.,Bahrami .2006. A Non-destructive Excavation in Parse-Pasargadae Archaeological Region. Journal of Environmental Science,Shahid Beheshti University,Vol.3, No.12, pp. 35-48.

Kruckman,L. 1987. The role of Remote Sensing in ethno historical research. Vol.14, pp. 343-351.

Rences, A. N.(ed.).1999. Remote Sensing for the earth sciences, Manual of Remote Sensing. John Wiley & Sons, New York.

Iannone,G. 2002. Annales History and the Ancient Maya State: Some Observations on the Dynamic Model. American Anthropologist, 104.1 March, pp. 68-78.

Rössler,M. 2003. Linking Nature and Culture: World Heritage Cultural Landscapes. In Cultural Landscapes: the Challenges of Conservation, World Heritage 2002 - Shared Legacy, Common Responsibility, Associated Workshops 11-12 November 2002, Ferrara – Italy. UNESCO World Heritage Centre consulted 2007. pp. 10-15.

Samani,B. 2002. Geomorphology and Tectono-eustatic Evolution of Zagros Folded Belt. Published report.25 P.

UNESCO.2006. IFLA Cultural Landscape Committee, Worldwide basic inventory /Register card Cultural Landscapes, Verbania.

Wilkinson,T.J. 2003. Archeological landscapes of the Near East. University of Arizona, Tuscan..