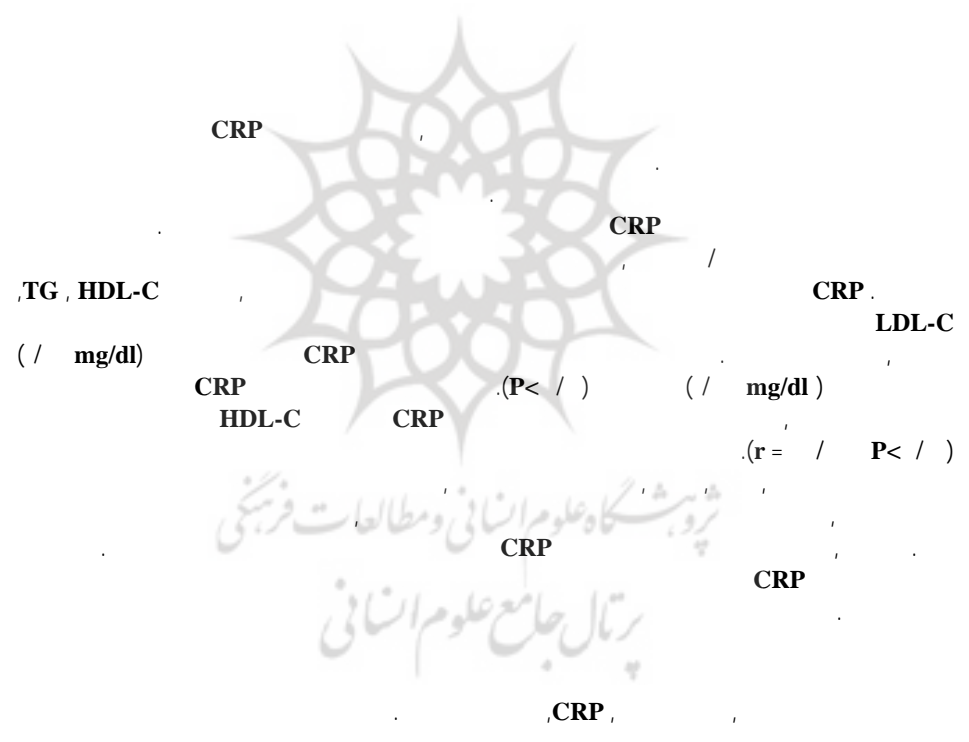


:
/ / :
/ / :

CRP





(APPs)

C-

()

CRP

C

()

CRP

CRP

()

CRP

()

MI

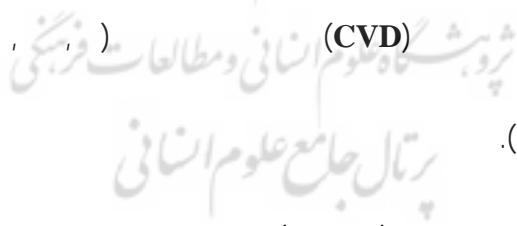
CRP

(, , , , ,)

CRP

(, , ,)

(CVD)



() (CVD)

(, ,)

CRP

-
- 1 - Acute Phase Proteins
 - 2 - C-Reactive Proteins
 - 3 - Phosphocholine
 - 4 - Phosphatidylcholine
 - 5 - Geffken et al

CRP

() CRP

CRP

CRP

()

CRP

CRP

()

CRP

()

CRP

BMI

()

CRP

() CRP

CRP

CRP

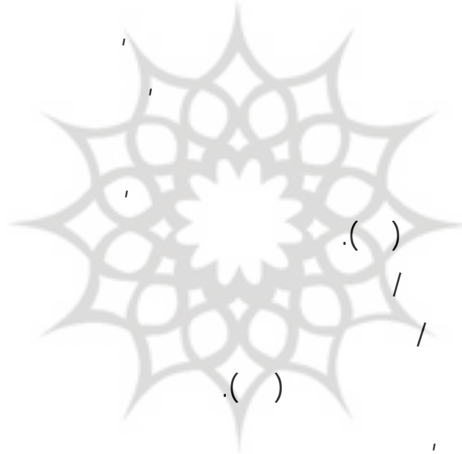
(

CRP

پروپوزیشن گاه علوم انسانی و مطالعات فرهنگی
رتال جامع علوم انسانی

1 - Rohde et al

2 - Mattusch et al



VO_{2max}

VO_{2max}

پروہش گاہ علوم انسانی و مطالعات فرہنگی

(ml.kg⁻¹.min⁻¹)

VO_{2max}

VO_{2max} (ml.kg⁻¹.min⁻¹) = [/ × (D)] - /

D

CRP

CRP

CRP

Auto Analyzer R1000

(CRP)

(CRP)

ml

mg/dl

CRP

Auto Analyzer

LDL HDL ,TG

Ziest Chem Diagnostic

R1000

Atuo Analyzer R1000

mg/dL

SPSS

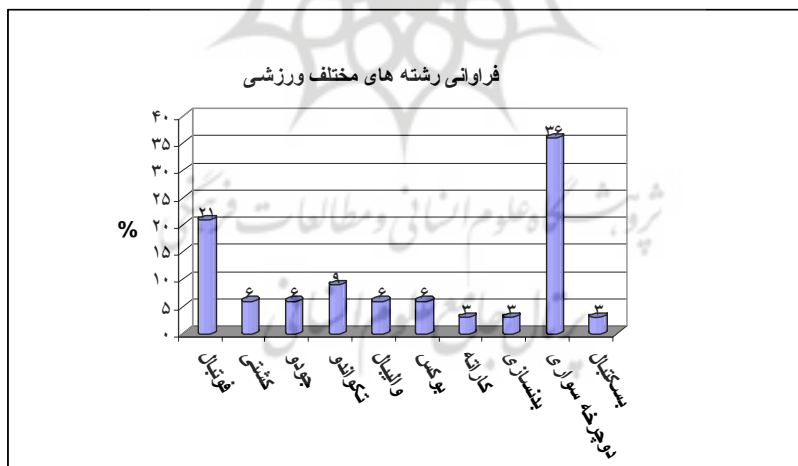
t

TG CRP

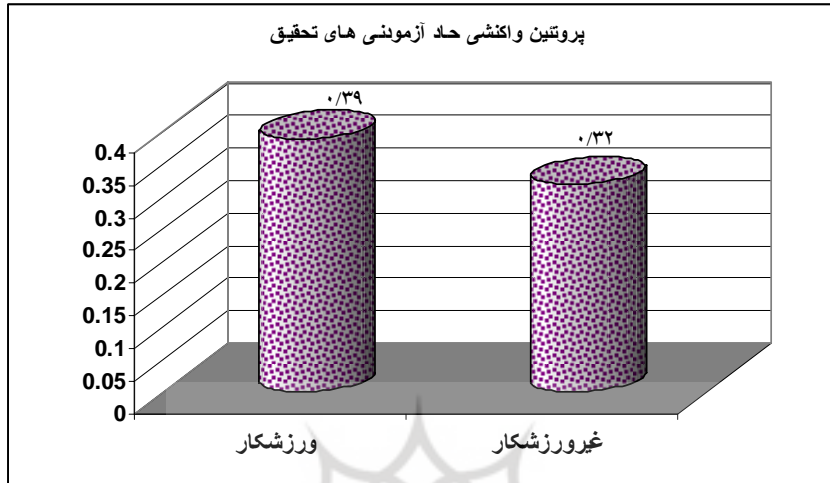
پروہش گاہ علوم انسانی و مطالعات فرہنگی
پرتال جامع علوم انسانی

		/ ± /	/ ± /	()
/	/	/ ± /	/ ± /	()
/	/	/ ± /	/ ± /	()

		/ ± /	/ ± /	(mg/dl)
/	/	/ ± /	/ ± /	(mg/dl)
/	/	/ ± /	/ ± /	(mg/dl) HDL- C
/	/	/ ± /	/ ± /	(mg/dl) LDL-C
/	/	/ ± /	/ ± /	(mg/dl) CRP
/	/	/ ± /	/ ± /	(m)
/	/	/ ± /	/ ± /	(ml.kg ⁻¹ .min ⁻¹) VO _{2max}



CRP



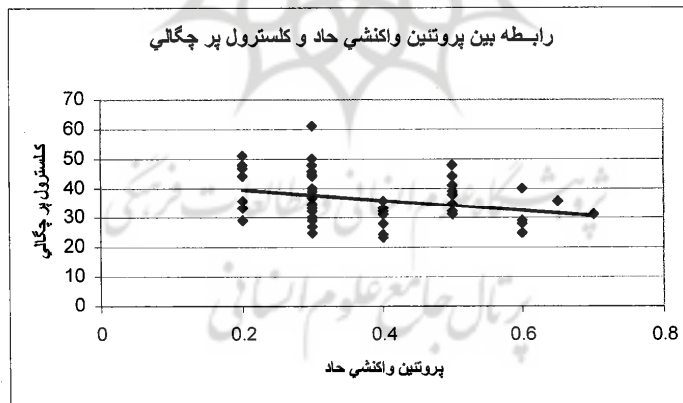
(CRP)

(P < /)

HDL-C

CRP

((r = /))



(CRP)

VO _{2max}	CRP	LDL-C	HDL-C							
							*	/	*	
					**	**	**	/	*	
				/	/	/	/	/	**	HDL-C
			/	/	/	/	/	*	/	LDL-C
		/	*	/	/	/	/	/	*	CRP
	/	/	/	*	/	/	**	/	*	
/	/	/	/	*	/	/	**	/	/	VO _{2max}

P= /

*

P= /

*

پژوهشگاه علوم انسانی و مطالعات فرهنگی

CRP

mg/dL⁻¹)

(P< /)
(/ mg/dL⁻¹)

C -

(/

CRP

()

(,)

CRP

CRP

() .(

() .() CRP

CRP

() .()

.() CRP

CRP

()

CRP

CRP

CRP

CRP

()

.()

CRP

CRP

CRP

()

.()

CRP

پروپوزیشن گاہ علوم انسانی و مطالعات فرہنگی

CRP

پرتال جامع علوم انسانی

(TNF- α)

(IL-6)

IL-6 IL-6 TNF- α
() CRP
() CRP
CRP
()
(P < / r = /) BMI CRP

CRP
CRP
() CRP
CRP
CRP
CRP
()
شروېشگاه علوم انساني ومطالعات فرهنگي
پرتال جامع علوم انساني
CRP

CRP

CRP

CRP

(TNF- α IL-6)

HDL-C

CRP

TG LDL

()

CRP

()

(.)

HDL-C CRP

HDL

CRP HDL

CRP

TG

پروفیسر شہنازہ علوم انسانی و مطالعات فرہنگی
پرنسپل جامعہ علوم انسانی

CRP

CRP

CRP

1. *AHA Scientific Statement :Aspirin as a therapeutic Agent in cardiovascular Disease, 71-0129 circulation. 1997; 96 : PP:2751-2753.*
2. *Albert MA. (2000). "The role of C-reactive protein in cardiovascular disease risk". Cur Cardiol Rep; 2(4): PP:274-9.*
3. *Ballou SP, Kushner I. (1992). "C-reactive protein and acute phase response". Adv Intern Med; 37 : PP: 313-36.*
4. *Bogaty P, Poirier P , Simard S. "Biological profiles in subjects with recurrent acute coronary event compared with subjects with Long-standing stable angina".*
5. *Barinas-Mitchell E, Cushman M, Meilahn EN, Tracy RP, Kuller LH.(2001). "Serum levels of C-reactive protein are associated with obesity, weight gain, and hormone replacement therapy in healthy postmenopausal women". Am J Epidemiol. 153: PP: 1094-1101.*
6. *Church TS, Barlow CE, Earnest JB, (2002). "Association between cardiorespiratory fitness and C-reactive protein in men". Arterioscler thromb vasc boil, 22:PP:1896-1876.*
7. *Eric S. Rawson , Partty S. Fredson. (2003). "Body mass index, but not physical activity, is associated with C-reactive protein". Med Sci Sports Exerc. 35:PP:1160-1166.*
8. *Gavin J.Blake, Paul M.Ridker.(2001). "Novel clinical marders of vascular wall inflammation", Circ Res, 89:PP:763-771.*
9. *Geffken DF, Cushman M.Burke GL, Polka JF, Tracy RP. (2001). "Association between physical activity and markers of inflammation in a healthy elderly population". Am J Epidemiol. 153 :PP:242-250.*
10. *Koenig W, Sund M,(1999). "C-reactive protein, a sensitive marker of inflammation, predicts future risk of coronary heart disease in initially healthy middle-aged men: result from the MONICA (Monitoring trends and Determination in Cardiovascular) Augsburg Cohort Study", 1984 to 1992). Circulation, 99(2) : PP:273-42.*
11. *Kushner LH, Tracy RP, Shaten J, meilahn EN for the MRFIT Research Group.(1996). "Relation of C-reactive protein and the risk of cardiovascular*

disease in the MRFIT nested case-control study". *Am J Epidemiol* 1996 : 114 : PP: 537-41.

12. Ridker P, Cushman C, Stampfer M, Tracy RP, Hennekens C. (1997). "Inflammation, aspirin and the risk of cardiovascular disease in apparently healthy men. *N Engl J med* ; 336: PP:973-9.

13. Lagrand WK, Visser CA, Hermens WT, Nissen HW. (1999). "C-reactive protein as a cardiovascular risk factor: more than an epiphenomenon"? *Circulation*, 100: PP:96-1023.

14. Lindahl B, Toss H, Siegbahn A, Venge P. (2000). "Markers of myocardial damage and inflammation in relation to long-term mortality in unstable coronary artery disease". FRISC study group. *Fragmin during Instability in Coronary Artery Disease. N Engl J Med.* 343 : PP: 1139-1147.

15. Mackinnon, Laurel T.(1999). "Advances in exercise immunology", *Human Kinetics*.

16. Mark B.Pepys and Gideon M. Hirschfield (2003). "C-reactive protein : a critical update", *J. Clin. Invest.* 111 : PP: 1805-1812.

17. Mattusch F, Dufaux B, Hein O, et al. (2000). "Reduction of the plasma concentration of C-reactive protein following nine months of endurance training". *Int J Sport Med.* 21 : PP: 21-24.

18. Michael J. La Monte; J. Larry Durstine ; Frank G. Yanowitz; Tobin Lin. (2002). "Cardiorespiratory fitness and C- reactive protein among a Tri-Ethnic sample of women". *Circulation*, 106 : PP: 403-406

19. Morrow D, Rifai N. antman EM, et al. (1998). "C-reactive protein is a potent predictor coronary syndromes : a TIMI 11 A substudy". *Thrombolysis in myocardial Infraction. Jam Coll Cardial* ; 31(7) : PP: 1460-5.

20. Nader Elgharibi, MD; David S.Chi ;(2003). "Walid Younis, Reactant can flag atherosclerosis and helper predict cardiac events" *postgraduate Medicine, Vol. 114, No 6.*

21. Ridker PM, Hennekens CH, Buring JE, Rifai N. (2000). "C-reactive protein and other markers of inflammation in the prediction of Cardiovascular disease in women". *N Engl J Med.* 342 : PP: 836-843.

22. Ridker P, Cushman C, Stampfer M, Tracy RP, Hennekens C.(1997). "Inflammation, aspirin and the risk of Cardiovascular disease in apparently healthy men". *N Engl J Med*; 336 :PP:973-9.

23. Ridker PM, Hennekens CH, Buring JE, Rifai N. (2000). "C-reactive protein and other markers of inflammation in the prediction of cardiovascular disease in women". *N Engl J Med .* 342: PP:836-843.

24. Ridker PM, Rifai N, Clear Field M, Downs JR. (2001). "Measurement of C-reactive protein for the targeting of statin therapy in the primary prevention of acute coronary events". *N Engl J Med.* 344: PP: 1959-1965.

25. Ridker PM. (2001). "High-sensitivity C-reactive protein : potential adjunct for global risk assessment in the primary prevention of cardiovascular disease". *Circulation.* 103 : PP: 1813-1818.

26. Ridker PM. (1999). "Evaluating novel cardiovascular risk factors: can we better predict heart attacks"? *Ann Intern Med.* 130 : PP: 933-937.

27. Rifai N, Ridker PM. (2001). "High-sensitivity C-reactive protein : a novel and promising marker of coronary heart disease". *Clin Chem ;* 47(3) : PP:403-11.

28. Roger W. Earle, Thomas R. Baechle. (2004). "NSCA essentials of personal training". *Human Kinetics Publication.*

29. Rohde LE, Hennekens CH, Ridker PM. (1999). "Survey of C-reactive protein and cardiovascular risk factors in apparently healthy men". *Am J Cardiol.* 84 : PP:1018-1022.

30. Vasabkari TJ, Kujala UM, Vasankari TM et al. (1998). "Reduced oxidized LDL levels after a 10-month exercise program". *Med Sci Sport Exerc.* 30 : PP: 1496-1501.

31. Visser M, Bouter LM, Mc Quillan GM, Wener MH. (1999). "Elevated C-reactive protein levels in overweight and obese adults". *JAMA.* 282 : PP: 2131-2135.

پښتونستان د علوم انساني او مطالعاتو فرېښتې
پرتال جامع علوم انساني