

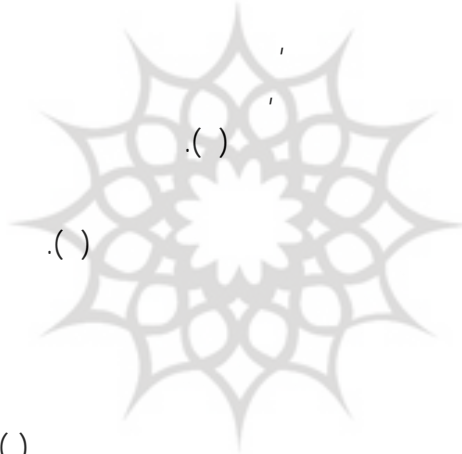
-
:
/ / :
/ / :



پیشگاه علوم انسانی و مطالعات فرهنگی
(r = %) (r = %)
پرتال جامع علوم انسانی
(P < /)

Email : ha_ameri2003@Yahoo.com

(.)



(.)

(.)

(.)
پروہش گاہ علوم انسانی و مطالعات فرہنگی
پرتال جامع علوم انسانی

-
- 1 - Organizational Culture
 - 2 - Efficiency
 - 3 - Effectiveness
 - 4 - Productivity

...

(.)

()

() (.)

(.)

()

(.)

()

(. ,)

()

پروہشگاہ علوم انسانی و مطالعات فرہنگی
پرتال جامعہ (نوم انسانی)

-
- 1 - Spence
 - 2 - Seonghee, Harton
 - 3 - Wallace & Weese
 - 4 - Silverthorne
 - 5 - Wallace & Koberg & Chusmir
 - 6 - Job Satisfaction
 - 7 - Doing Things right
 - 8 - Doing the right thin

()

()

()

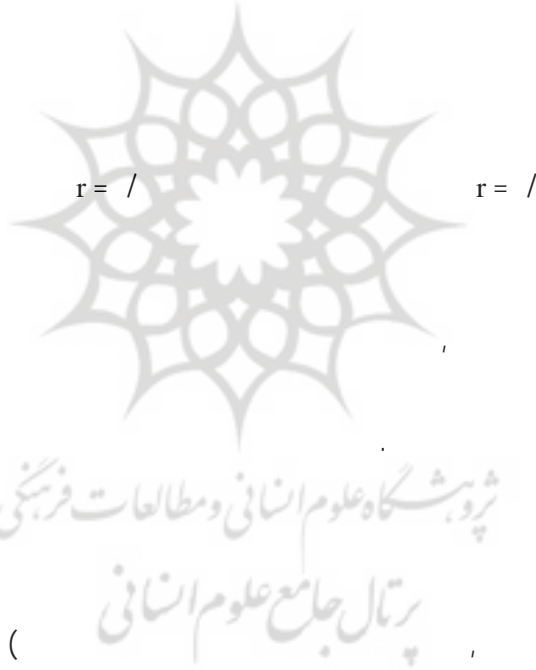
()



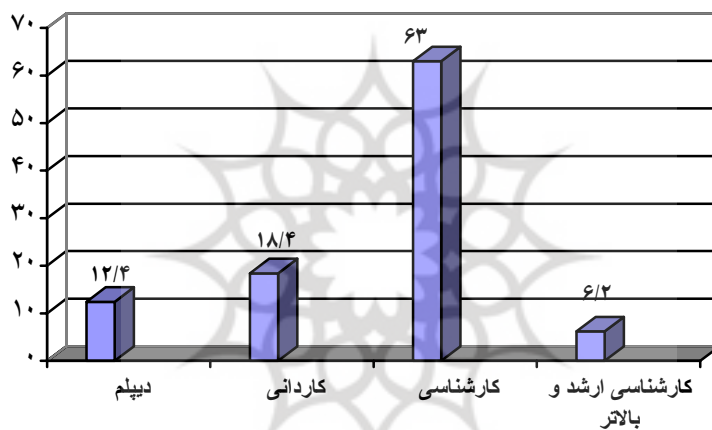
پروہش گاہ علوم انسانی و مطالعات فرہنگی
رتال جامع علوم انسانی

()

-
- 1 - Hersy & Blanchard
 - 2 - Oreilly
 - 3 - Field

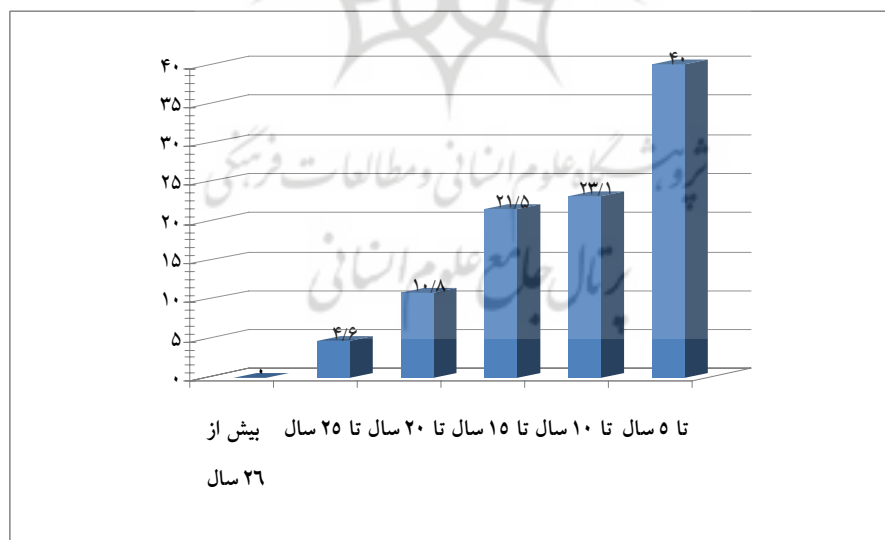
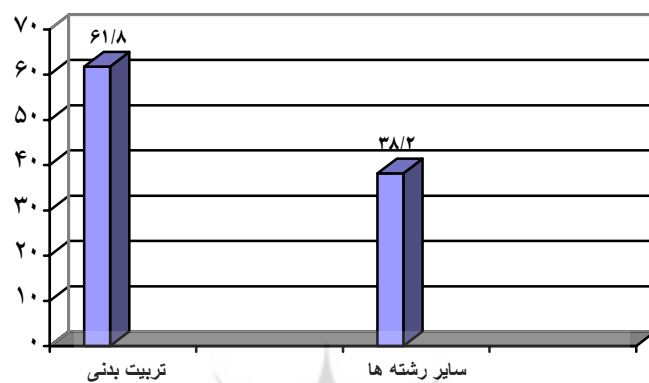


-
- 1 - Content Validity
 - 2 - Reliability
 - 3 - Test- Retest
 - 4 - Spearman Correlation



پژوهشگاه علوم انسانی و مطالعات فرهنگی

رتال جامع علوم انسانی
() .



...

() (P< /) r = /

()

| | | | | | | |
|--------|--|--|---|---|--|--|
| | | | | | | |
| r* = / | | | / | / | | |
| | | | / | / | | |

(P< /) *

N =

| | | | | | | |
|---|-----|--|---|---|---|--|
| | () | | | | | |
| A | / * | | | / | / | |
| B | / * | | / | / | / | |
| C | / * | | | / | / | |
| D | / * | | | / | / | |
| E | / * | | | / | / | |
| F | / * | | | / | / | |
| G | / * | | | / | / | |
| H | / * | | | / | / | |
| I | / * | | | / | / | |
| J | / * | | | / | / | |
| - | | | | / | / | |

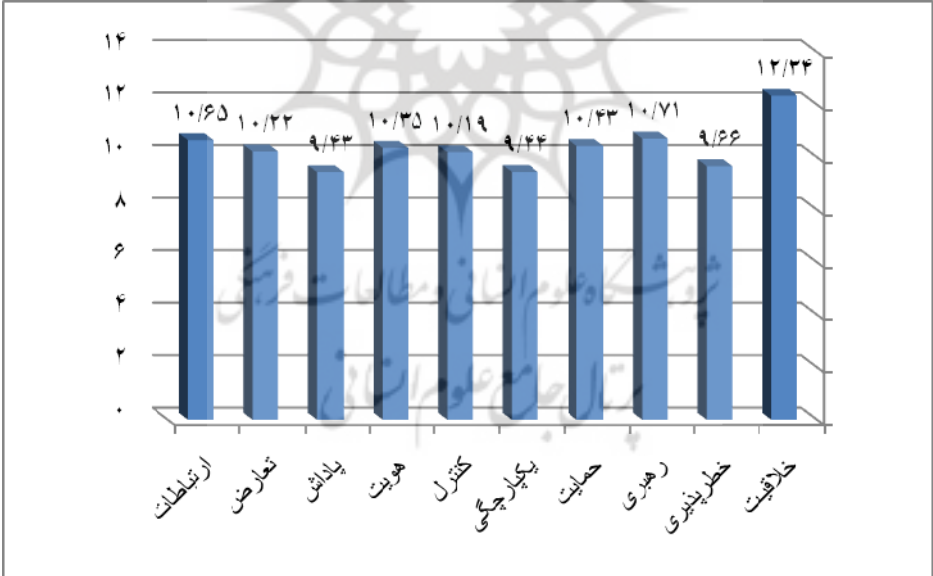
(P< /) *

N =

-

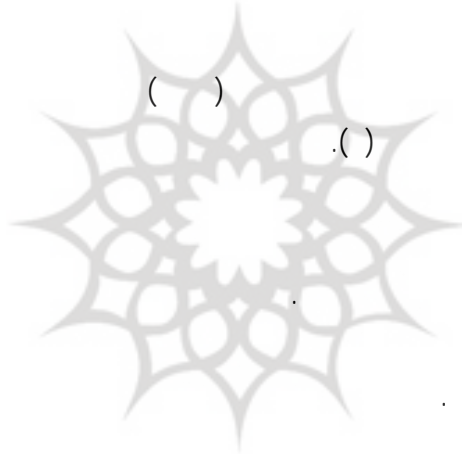
(P < /) :

(C) (B) (A))
(H) (G) (F) (E) (D)
(J) (I)



-

() , () ()



پروپوزیشن گاہ علوم انسانی و مطالعات فرہنگی
پرتال جامع علوم انسانی

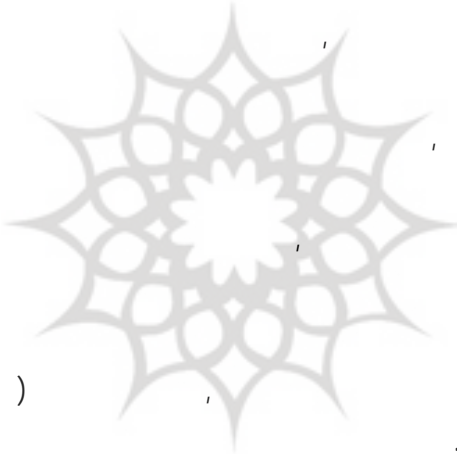
(.)

(.)



() ، () ، ()

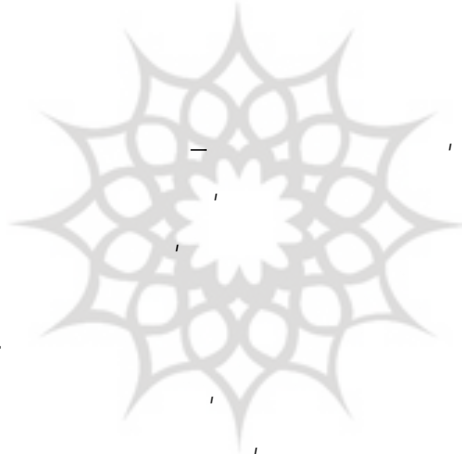
()



() ، ()

پروہش گاہ علوم انسانی و مطالعات فرہنگی
پرتال جامع علوم انسانی

() () ، ()



پروفیسر شگاہ علوم انسانی و مطالعات فرہنگی

()

پرتال جامع علوم انسانی ()

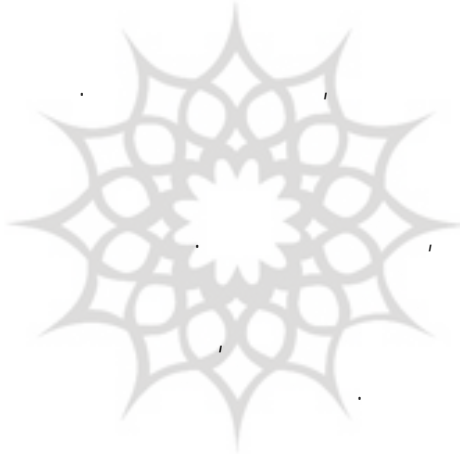
()

()



()

()



()

()

()

پروہشگاہ علوم انسانی و مطالعات فرہنگی
پرتال جامع علوم انسانی

()

-
8. Andrew, I.Dorbin. (1997). *"Fundamental Behavior"*. South Western Company, P:32.
9. Bartel, C.A. (1994). *"Productivity gains from the implementation of employee training programs"*. *Industrial Relations*, PP:411-425.
- 10.Coulson, Thomas, C. (1993). *"harnessing the potential of groups"*. A survey undertaken for lotus development. London, Adaptation Ltd.
- 11.Davenport, T.H and Prusak, L. (1998). *"Working knowledge :How organizations manage what they know"*. Boston, MA : Harvard Business School Press.
12. De Oliveria, J.M. (1980). *"The relationship among philosophy of physical education, leader behavior and organizational climate in selected Brazilian Faculty of Physical Education"*. University of Organ.
- 13.Ellis, Steven And Dick Penny. (2003). *"Introduction to organizational behavior"*. McGraw Hill.
14. Gray, David and Mollary, Geoff. (1998). *"Making sense of managing culture"*. International Thomson Business Press, Boston, P:129.

-
-
15. Heather K. Spence. (2002). *"The impact of workplace empowerment, organizational trust on staff nurses work satisfaction and organizational commitment"*. *Advances in Health Management*, PP:56-85.
 16. Herxy. Pual and Blanchard, Kenneth, H. (1983). *"Management of organizational Behavior"*. New Jerxy , Prentice-Hall.
 17. Koberg, C.S., & Chusmir, L.H. (1987). *"Organizational culture relationships with creativity and other job-related variables"*. *Journal of Business Research*, Vol 15, Issu. 5, PP:397-40.
 18. Kudyba, Stephan. (2003). *"Knowledge management: The art of enhancing productivity and innovation with the human resource in your organization"*. Published in *DM Review*, April.
 19. Oreilly, C.A. (1989). *"Corporations, Culture and commitment : Motivation and social control in organizations"*. *Management California Review*, Vol 31, No 4, PP:9-25.
 20. Pastore, D.Inglis, S & Danychuk, K. (1995). *"Understanding retention factors in coaching and athletic management : differences by gender, positions geographic location"*. *Journal of Sport Management* , Vol 20, No 4, PP:427-441.
 21. Robbins, Stephen P. (1997). *"Essential of Organizational Behavior"*. Fifth Edition, Prentice Hall. P:237.
 22. Seonghee, Cho and , Harton. (2006). *"Measuring the impact of human resource management practices on hospitality firm's performance"*. *International Hospitality Management*, Elsevier Ltd .
 23. Silverthorne, Coling. (2004). *"The impact of organizational culture and person-organization fit on organizational commitment and job satisfaction Taiwan"*. *Leadership & Organization Development Journal* , Vol 25, Number 7, PP:592-599.
 24. Wallace, Mike , James Weese, W. (1995). *"Leadership organizational culture and job satisfaction"*. *Journal of Sport Management*, PP:182-193.
 25. Weese, W Maclean and J, Corelett. (1993). *"Coaches as leaders and culture builders"*. *Journal of Sport Management* , Human Kinetics.
 26. Wright. P.M. (1990). *"Operationalisation of Goal difficulty as a moderator of goal difficulty: Performance Relationship"*. *Journal of Applied Psychology*, 75, PP:227-234.